



CoolPax Cooling Vest

at an

Waste Incineration Company

We were asked to supply our CoolPax™ PCM Cooling Vests for test purpose executed by a waste incineration company.

During the test they made photo's with a special thermal imaging camera in order to show / proof the testing results.

Usually the incineration workers do work 1 hour and than have a break of 30 minutes.

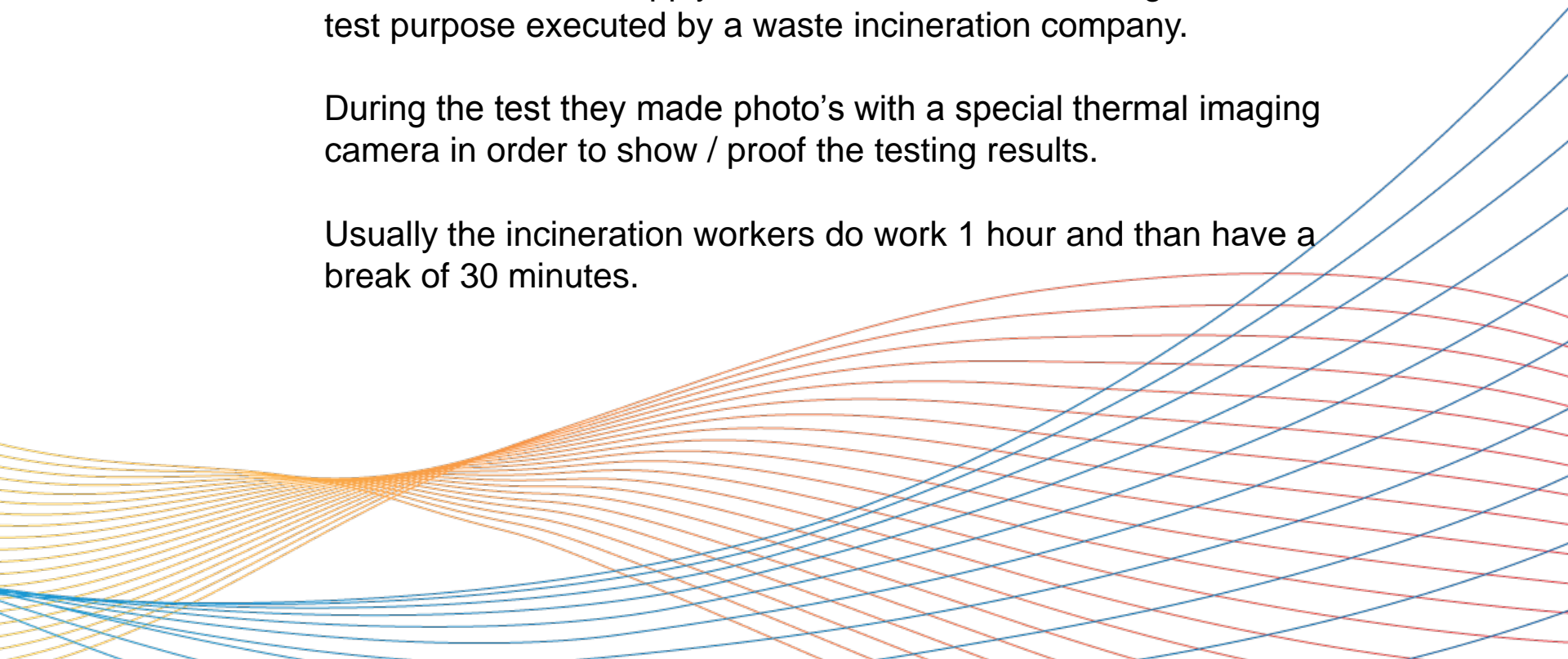


Photo 1

Here the pieces of garbage will be burned.
The core temperature of the material during the incineration is 1,300°Celsius.
The environment temperature of the workers is 80° Celsius.

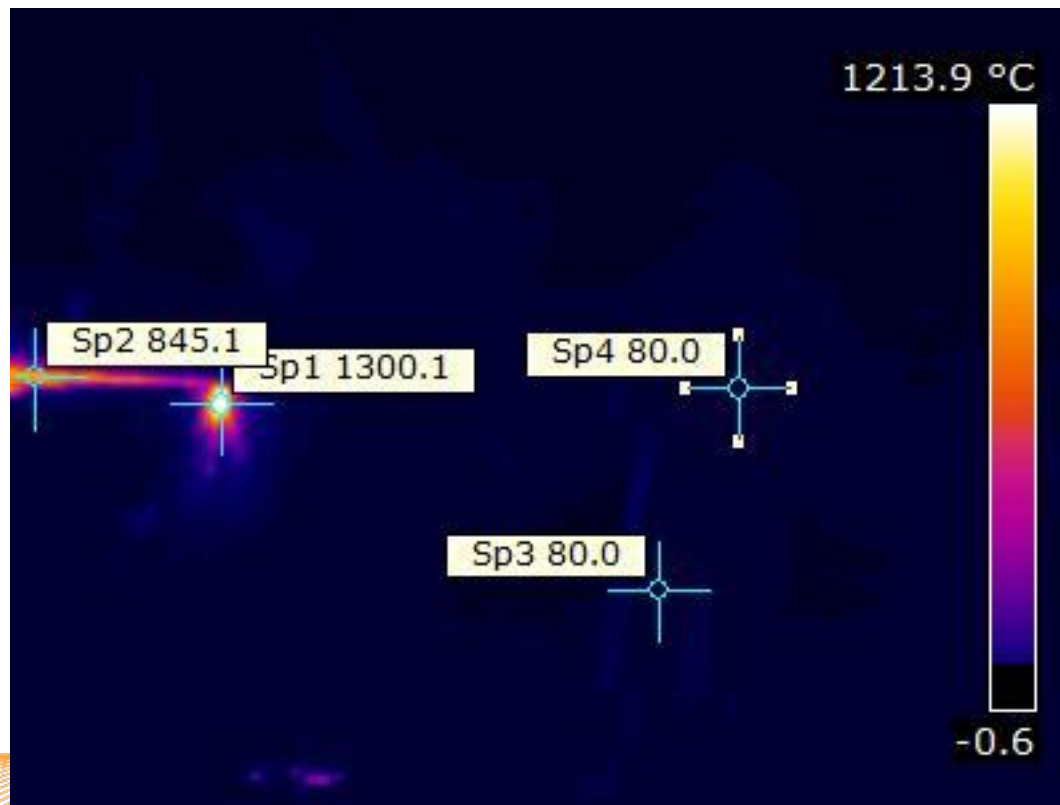


Photo 2

On the right you see the worker in protective clothing where the temperature of 80° Celsius was measured during the work.

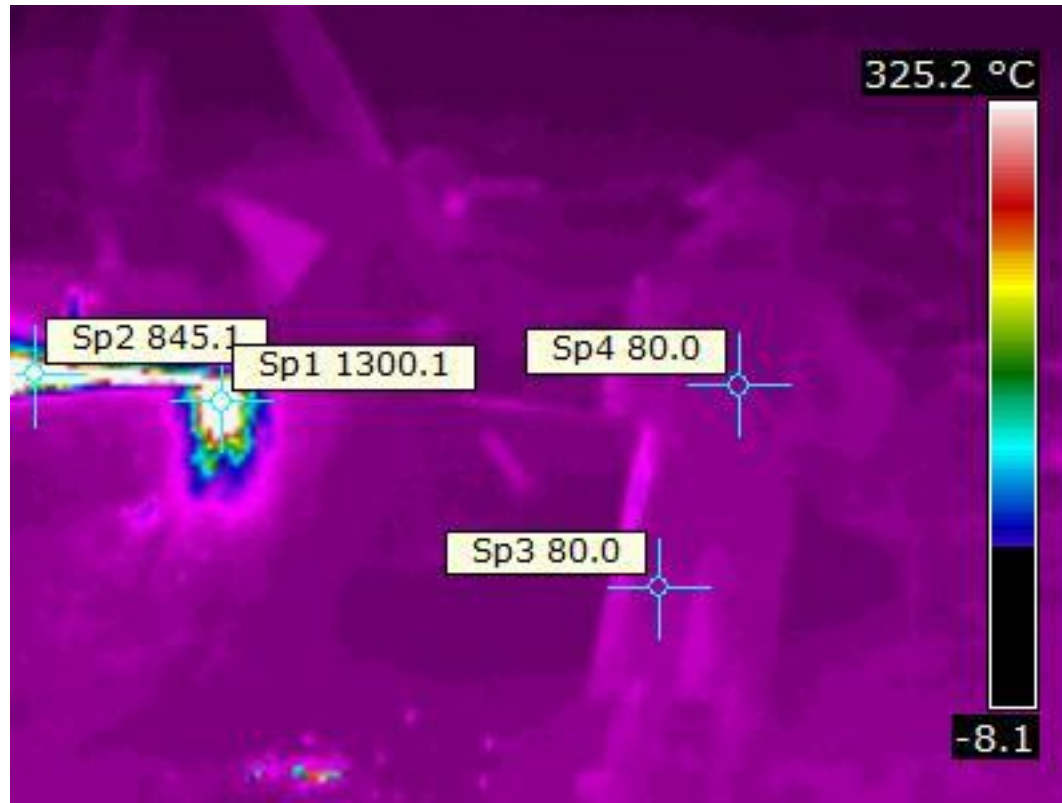


Photo 3

Worker in working area without CoolPax™ Cooling Vest



Photo 4

Environment temperature at the start of the incineration with
CoolPax™ Cooling Vest



Photo 5

With CoolPax™ Cooling Vest in working area

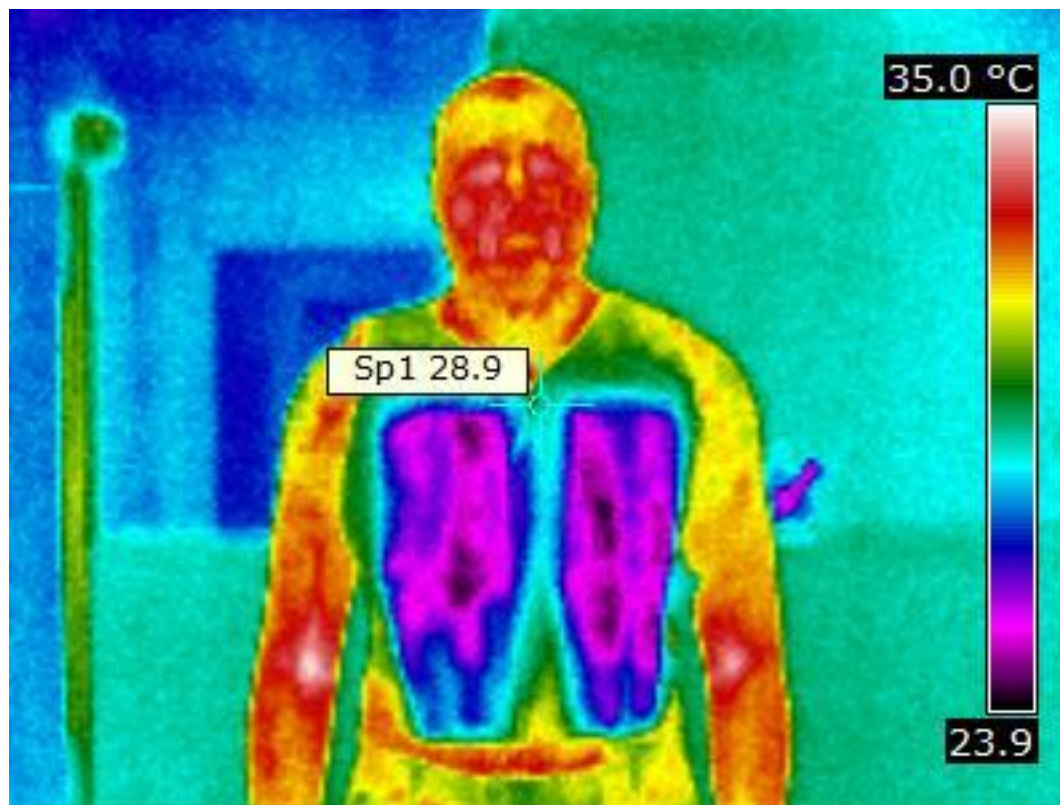


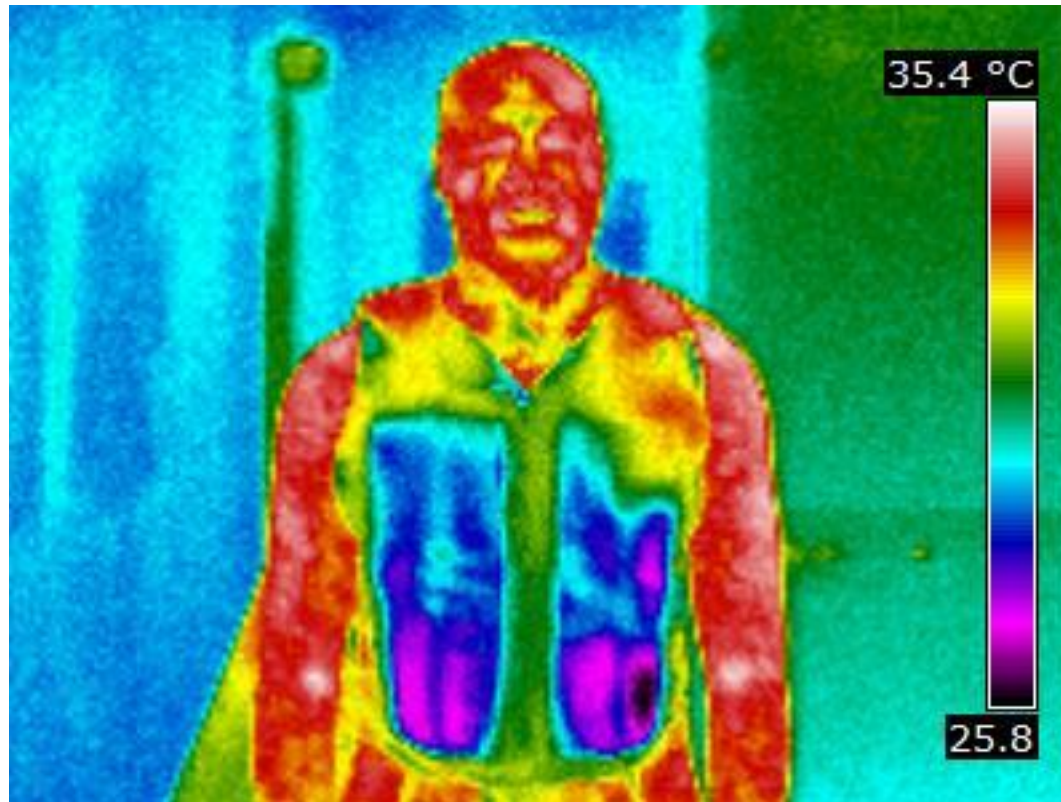
Photo 6

Environment temperature after 2 hours working in
a CoolPax™ Cooling Vest



Photo 7

With CoolPax™ Cooling Vest after 2 hours



TEST CONCLUSION

Workers feel very comfortable, have a better concentration and therefor perform better.

Workers can work now for 3 hours with a break of 10 minutes.

Both employer and workers are very happy with the new work situation.

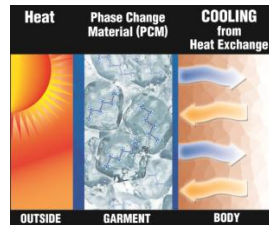


POWERED BY

COOLPAX™

Phase Change Cooling Products

Product Benefits



- ✓ Commonly used under hazardous materials suits, military combat gear, mascot costumes and other apparel
- ✓ Phase Change Material (PCM) releases long-lasting, temperature-specific (14 °C) cooling relief
- ✓ PCM is non-toxic, non-flammable, durable, re-usable, lighter than water, and does not produce condensation
- ✓ Cost effective personal cooling solution
- ✓ Targeted cooling for key heat zones
- ✓ Enhance comfort and performance
- ✓ Provide cooling comfort and heat stress prevention
- ✓ Additional PCM inserts are sold separately for extended relief

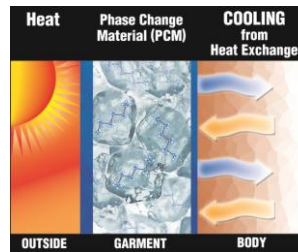
Phase Change Cooling Inserts maintain a comfortable 14°C for up to 3 hours

POWERED BY

COOLPAX™

Phase Change Cooling Products

How it Works



- Submerge PCM inserts in ice water for up to 45 minutes, or place in a freezer, until solid
- Return inserts to garment pockets
- Wear; repeat steps as needed (or use additional inserts for continuous relief)



TECHNICHE
PERFORMANCE, SAFETY, COMFORT

***Climate Control Products from TechNiche.
keeping you comfortable at work, rest & play!***

