

Test of TechNiche's

TechKewl Cooling Vest at an **Waste Incineration Company**

We were asked to supply our TechKewl™ PCM Cooling Vests for test purpose executed by a waste incineration company.

During the test they made photo's with a special thermal imaging camera in order to show / proof the testing results.

Usually the incineration workers do work 1 hour and have than a break of 30 minutes.



Photo 1

Here the pieces of garbage will be burned.

The core temperature of the material during the incineration is 1,300° Celsius.

The environment temperature of the workers is 80° Celsius.

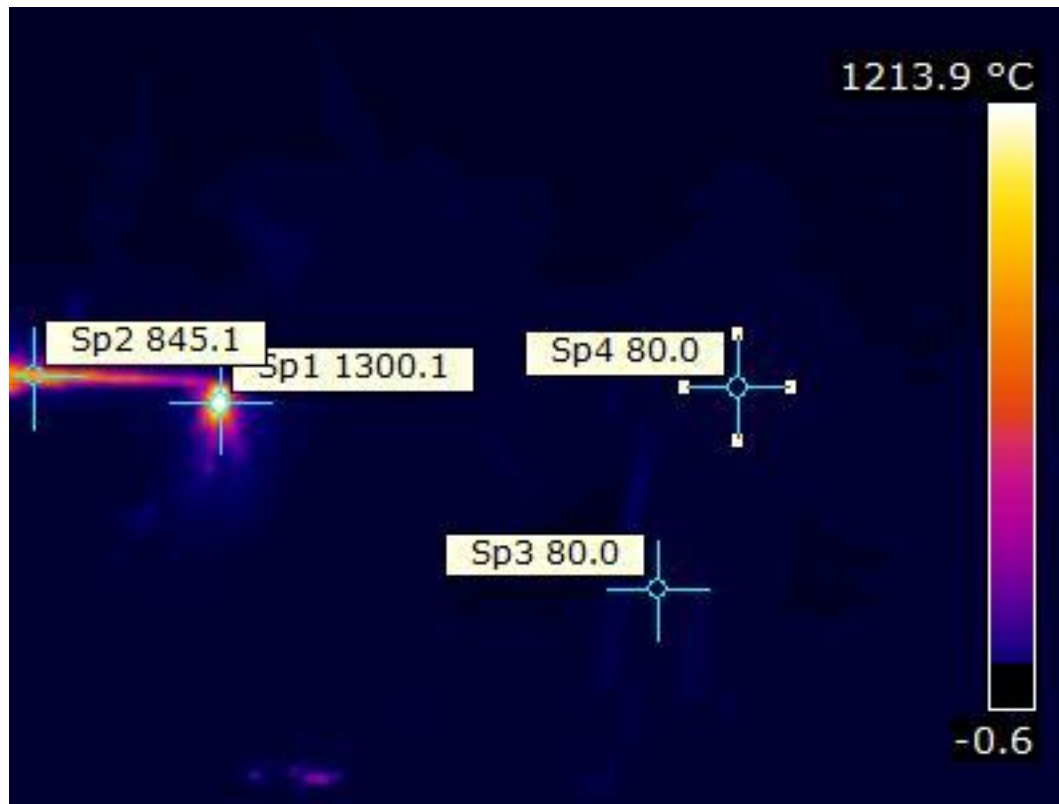


Photo 2

On the right you see the worker in protective clothing where the temperature of 80° Celsius was measured during the work.

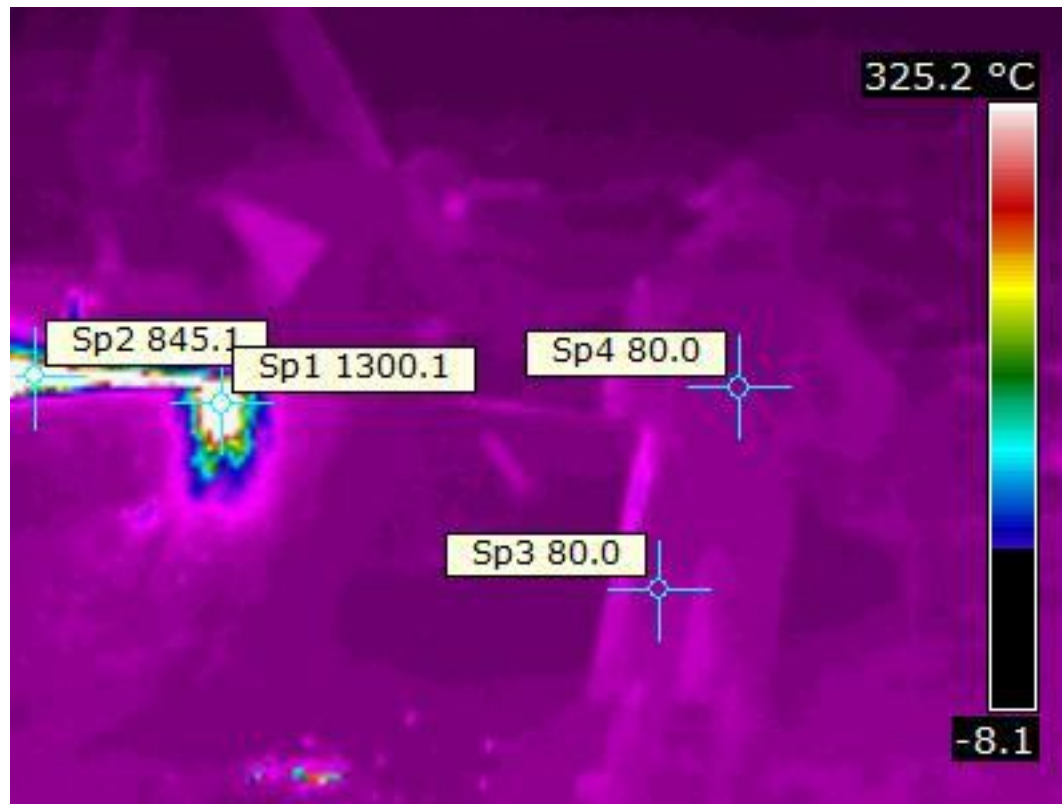


Photo 3

Worker in working area without TechKewl™ Cooling Vest



Photo 4

Environment temperature at the start of the incineration with
TechKewl™ Cooling Vest



Photo 5

With TechKewl™ Cooling Vest in working area

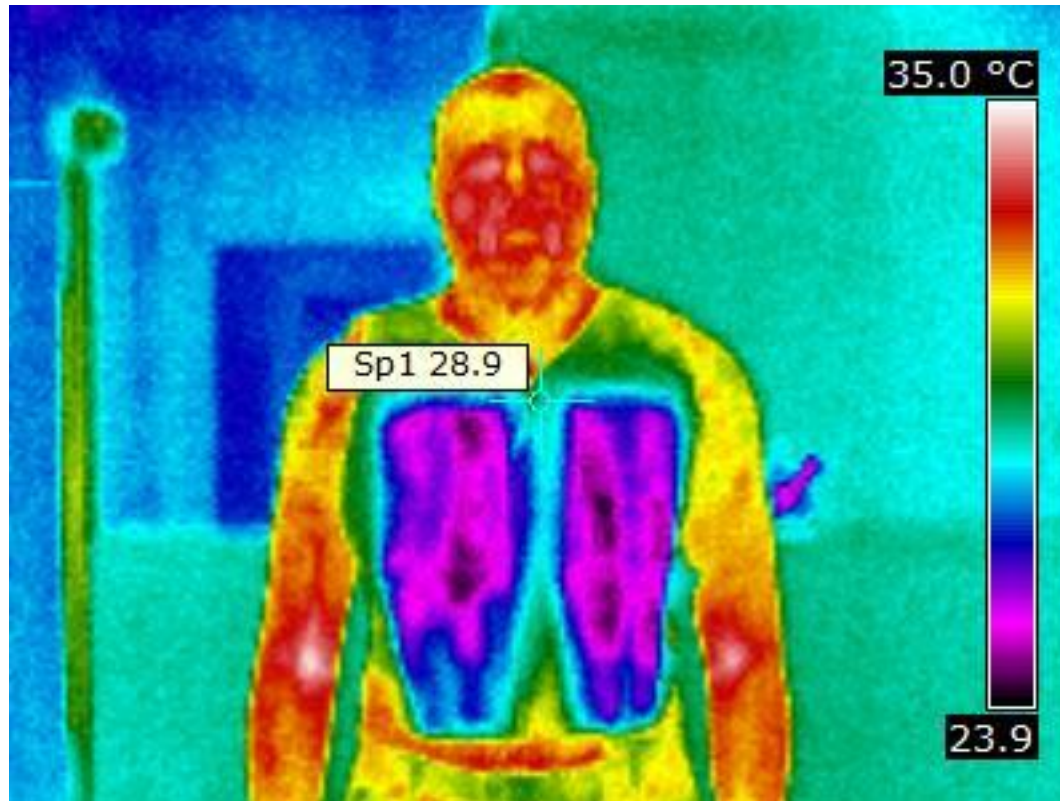


Photo 6

Environment temperature after 2 hours working in a TechKewl™ Cooling Vest

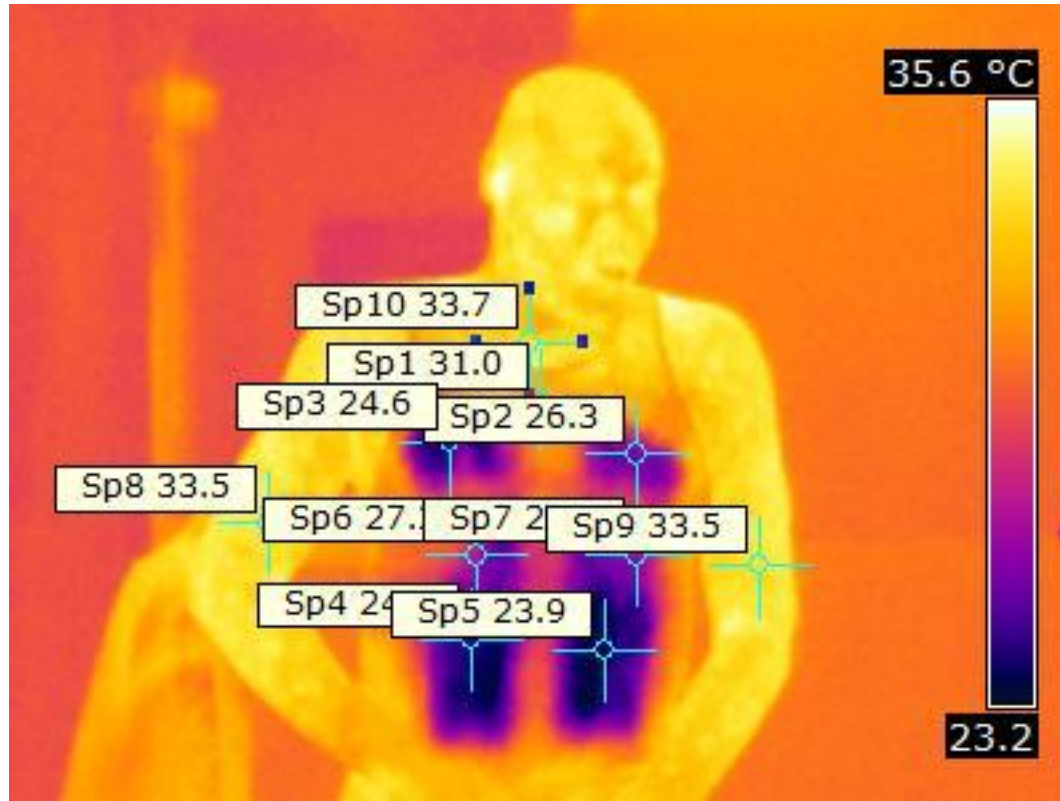
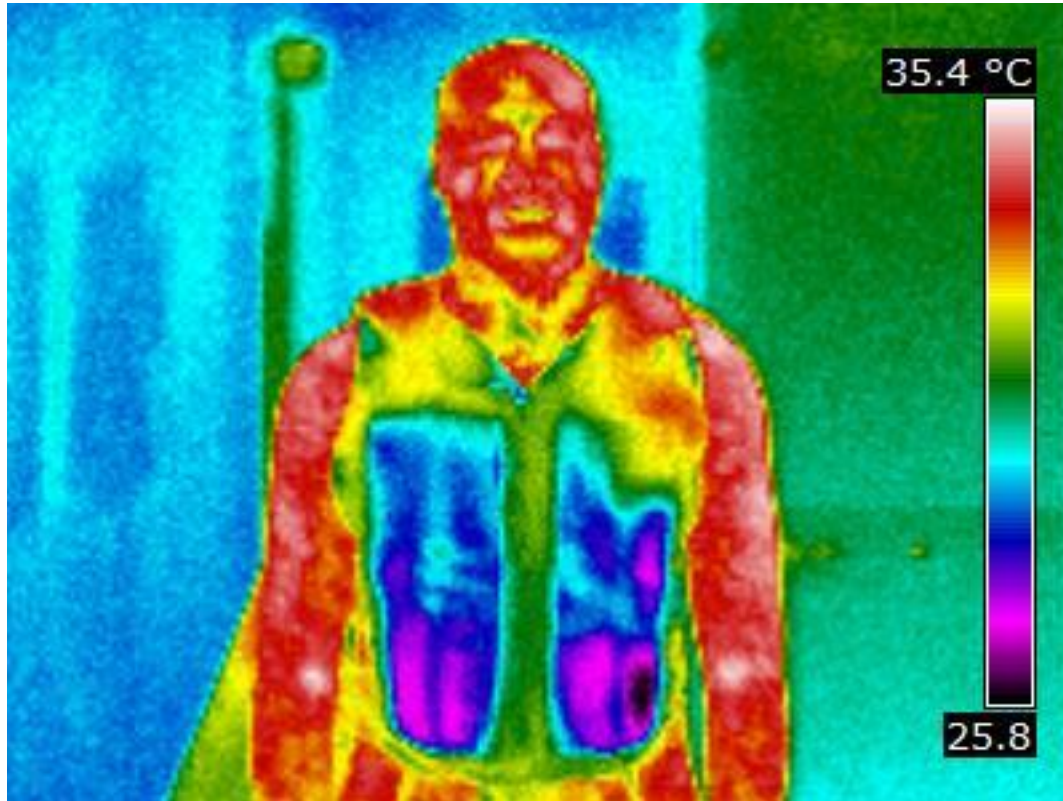


Photo 7

With TechKewl™ Cooling Vest after 2 hours



TEST CONCLUSION

Workers feel very comfortable, have a better concentration and so perform better.

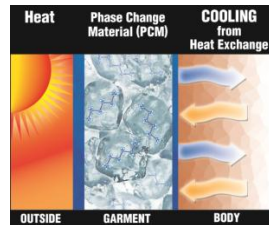
Workers can work now for 3 hours with a break of 10 minutes.

Both employer and workers are very happy with the new work situation.



Phase Change Cooling Products

Product Benefits



- ✓ Commonly used under hazardous materials suits, military combat gear, mascot costumes and other apparel
- ✓ Phase Change Material (PCM) releases long-lasting, temperature-specific (14 °C) cooling relief
- ✓ PCM is non-toxic, non-flammable, durable, re-usable, lighter than water, and does not produce condensation
- ✓ Cost effective personal cooling solution
- ✓ Targeted cooling for key heat zones
- ✓ Enhance comfort and performance
- ✓ Provide cooling comfort and heat stress prevention
- ✓ Additional PCM inserts are sold separately for extended relief



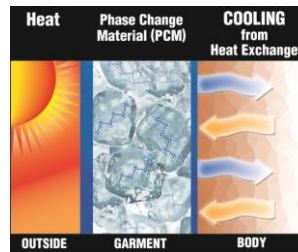
Phase Change Cooling Inserts maintain a comfortable 14°C for up to 3 hours





Phase Change Cooling Products

How it Works



- Submerge PCM inserts in ice water for up to 45 minutes, or place in a freezer, until solid
- Return inserts to garment pockets
- Wear; repeat steps as needed (or use additional inserts for continuous relief)



***Climate Control Products from TechNiche.....
keeping you comfortable at work, rest & play!***

Vriesenrot 14

9200 Dendermonde

Belgium

www.techniche-europe.com

info@techniche-europe.com

